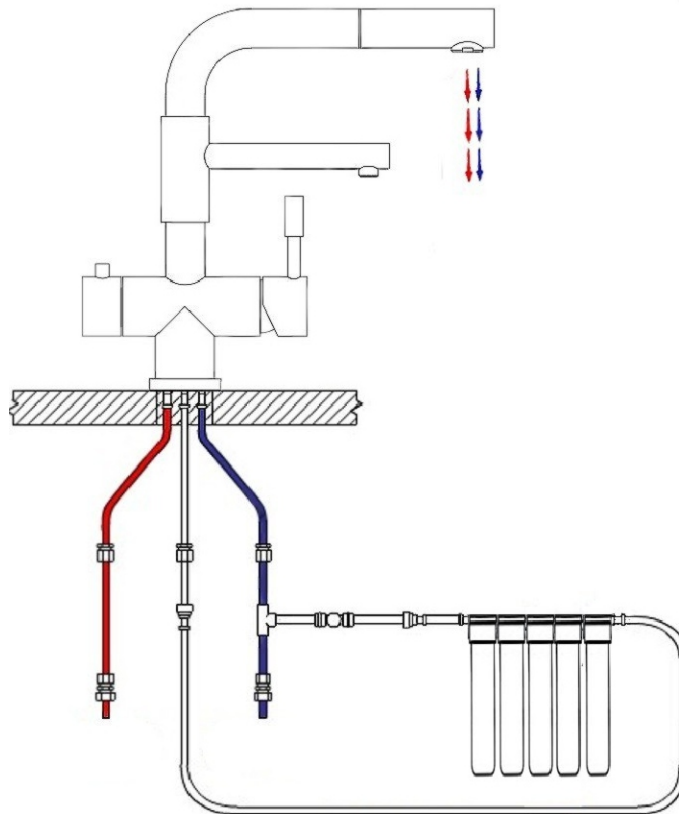




Castle Bay FilterWater Faucets and BlueFresh Installation Guide



The company reserves the right to alter, change or modify product specifications without prior notice.

Castle Bay FilterWater Stainless Steel Faucet and BlueFresh Filtration System

Your Castle Bay FilterWater faucet is designed to connect to Castle Bay BlueFresh filtration system. The component parts of the system are precision manufactured to the highest quality standard. Correctly installed and maintained your Castle Bay water filter system will provide many years of trouble free use and a convenient, secure supply of high quality drinking water.

The Castle Bay FilterWater faucet is also designed with compatibility in mind with other brands. Castle Bay FilterWater faucet uses standard connection so it is compatible with most other water purification system in the market . However, it is buyer's responsibility to ensure the compatibility issue.

If you are considering carrying out the installation of your Castle Bay FilterWater Faucet and BlueFresh System as a DIY project, we respectfully suggest you consider the risks associated with installing water appliances. Castle Bay recommends a qualified plumber to install all water appliances.

Frequently Asked Questions

unsightly deposits on the surface of a cup of tea

In hard water areas a 'scum' can appear on the surface of hot tea. Although unsightly it is completely harmless. The cause is related to the precipitation of calcium and magnesium in hard water regions and a reaction with the tea bag material.

milky water

With a new system a significant amount of air is trapped in the microporous structure of the filter system cartridge. This will form tiny bubbles and give the water in the glass a milky appearance that will soon disperse when left to stand for a few moments. This may continue for 2 to 3 weeks until the filter system cartridge is fully conditioned.

tiny black specks in the water

Tiny black specks may appear initially in the water. These are harmless particles of carbon; residues from the manufacturing process. Allow the filtered water to continue flowing for a while until they are completely flushed through.

the filtered water flow slows to an unacceptable level

A significant reduction in flow is an indication that the ceramic shell of the cartridge is blocked with contaminants. This often occurs soon after a new system is installed due to plumbing residues, solder fluxes etc, becoming trapped on the surface of the filter cartridge. **ALWAYS FLUSH THE PIPES BEFORE INSTALLING A NEW FAUCET OR NEW WATER FILTER SYSTEM.** If this happens, please contact us for advise how to clean the faucet cartridge and filter system cartridge.

Filter System Cartridge Replacement Cycle

The recommended filter cartridge change cycle is 6 months. However, the period between cartridge replacements is not guaranteed; it is an estimate based on filtering mains water of average quality. Please bear in mind that water quality varies from locality to locality and situation to situation. In areas with higher than average turbidity (particle contamination) more frequent cartridge changes may be necessary.

Choosing the location

When deciding where to position both the stop valve and the filter housing, bear in mind the need for easy access to make future filter cartridge changes a simple process. Ensure the terminations of the two braided flexible hoses are within easy reach of their respective connections to avoid stretching the hoses.

Sensible Precautions

If you are planning to leave the premises where the filter is installed for an extended period, turn off the water supply to the filter using the filter service stop valve, then operate the filtered water tap on and off again to release the pressure in the system.

Installation Illustration

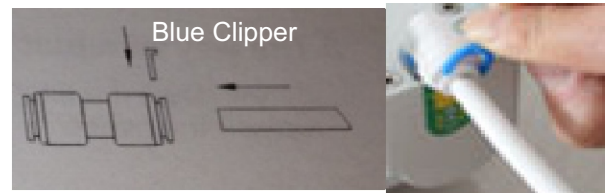
Although Castle Bay BlueFresh system is designed for ease of installation, careful planning and preparation before commencing the installation will ensure the procedure is straightforward and trouble-free.



TIPS

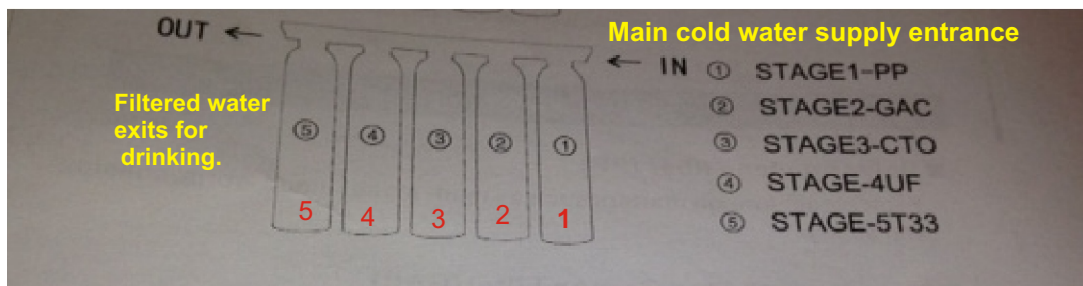
Identify all the necessary parts before the installation.

Blue Clipper is necessary to clamp tight the tube connection to prevent leaks. Do not lose the Blue Clipper.



For secure connection, we recommend to use plumber tape.

Filtration process starts in the sequence 1 -> 2 -> 3 -> 4 -> 5. Water enters Cartridge 1, and exits cartridge 5 for clean drinking water..



Check the installation for leaks - Turn off the filter tap and carefully check the whole system for leaks, particularly at every connection level.

Turn on filter tap and allow the filtered water to run for approximately 10 minutes to clear any manufacturing or installation residues.